



Wireless Digital Door Phone System

Order ref: 350.003UK

User Manual

A stylish wireless digital door phone that allows you to talk to your visitors before opening the door. No wires are required between the outdoor and indoor units, making this system very simple to install. It's also possible to connect the outdoor unit to an electronic door lock, utilising the door release button on the indoor unit.

Features:

- Simple wire free installation and setup
- Up to 300m transmission range
- 8 Ringtones and 3 adjustable volume levels
- Weatherproof outdoor unit can be connected to an electronic lock (not supplied)
- Supplied with 2 power supplies, mounting brackets and fixing kits

In the box:

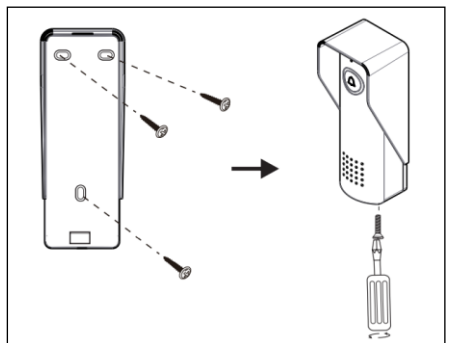
- Outdoor unit (IP44)
- Indoor unit
- UK Power Supply (outdoor unit)
- USB Power Supply (indoor unit)
- 1m USB-C power lead (indoor unit)
- Electronic lock connecting wire
- Rain Shade (outdoor unit)
- Fixing Plate (indoor unit)
- 2pcs Fixing Kit
- User Guide

Installation:

Outdoor unit

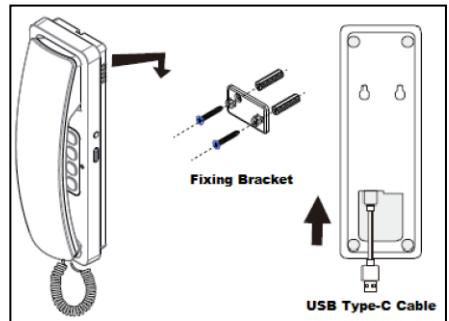
1. Fasten the rain shade on the wall around 1.4~1.7m above the ground using the screws and plugs provided in the fixing kit.
2. Connect the 12V DC power supply to the back of the unit as described in the wiring diagram below.
3. Slot the unit into the rain shade and secure from underneath using the fixing screw provided in the fixing kit.

NOTE: it is recommended that all wiring connections for both the electronic door lock and 12V DC power supply are undertaken by a qualified electrician.



Indoor unit

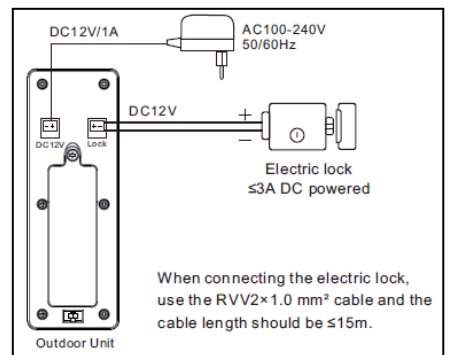
1. The indoor unit can either be stood on a suitable flat surface or hung on a wall using the fixing plate provided.
2. Please ensure the unit is in a dry environment away from direct sunlight and any wireless items that may interfere with the signal such as cordless phones, indoor aerials or WiFi hubs and routers.
3. After installation connect the USB Type-C cable to the back of the unit and the other end to the USB power supply provided.



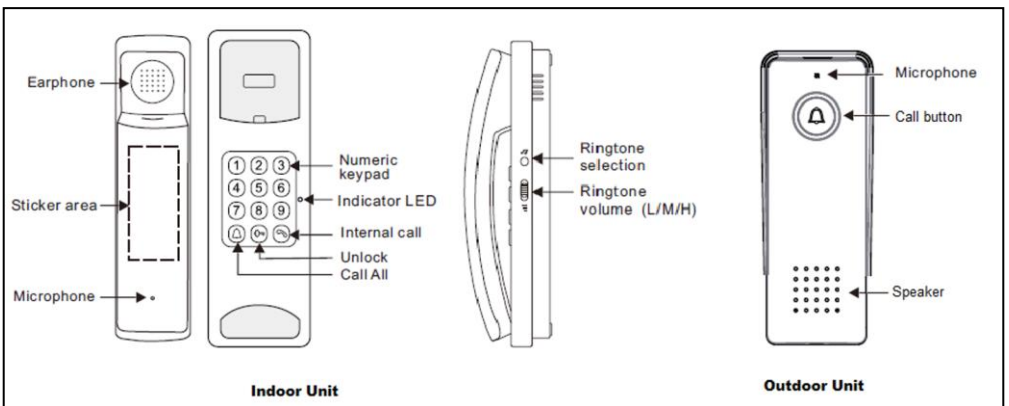
Wiring Diagram

1. It's possible to connect the outdoor unit to an additional electronic door lock (not supplied) using the connecting wire provided.
2. This is only possible if the outdoor unit is connected to mains power using the 12V DC power supply mentioned above and not when using a battery.
3. It is recommended to use RVV2 x 1.0mm² cable to connect to the electronic door lock and no longer than 15m.
4. Once the door lock is connected correctly the unlock button on the indoor unit will be activated on the indoor unit.

NOTE: it is recommended that all wiring connections for both the electronic door lock and 12V DC power supply are undertaken by a qualified electrician.



Operation:



1. When the call button is pressed on the outdoor unit, the indoor unit ringtone will sound and the indicator LED will illuminate.

2. Pick up the handset to talk with your visitor and replace on the base station to end the conversation.
3. If an electronic door lock is connected you can also press the unlock button to admit your visitor entry to your property before replacing the handset on the base station.
4. It is possible to select a different chime on the indoor unit. Simply scroll through the 8 available melodies by pressing the ringtone selection button repeatedly.
5. To adjust the ringtone volume, slide the ringtone volume button to select either high, medium or low volume setting.

Specifications:

Frequency	426~440 MHz
Range	Up to 300m (open area)
IP rating	IP44 (External unit only)
Standby current	<300µA (outdoor unit)
Working current	<200mA (outdoor unit)
Power supply: indoor unit	DC5V/0.5A USB TYPE-C
Power supply: outdoor unit	Input: AC100-240V 50/60Hz Output: DC12V 1A
Dimensions: indoor unit	210 x 68 x 58mm
Dimensions: outdoor unit	158 x 62 x 51mm (including shade)
Weight: indoor unit	240g
Weight: outdoor unit	172g (including shade)

Warning:

- Keep the indoor unit away from areas of high temperature, direct sunlight or high humidity.
- Do not place the indoor unit near other wireless devices which may cause interference.
- Do not install the product at a location where multiple concrete walls may block signals and affect the transmission.
- Disconnect the power supplies of this device when left unused for a long period of time.
- Do not attempt to repair this device or take apart under any circumstances, as this will invalidate your warranty.



This product is classed as Electrical or Electronic equipment and should not be disposed with other household or commercial waste at the end of its useful life. The goods must be disposed of according to your local council guidelines.

Hereby, AVSL Group Ltd. declares that the radio equipment type: 350.003UK complies with Directive 2014/53/EU
 The full text of the EU declaration of conformity for 350.003UK is available at the following internet address:
<http://www.avsl.com/assets/exportdoc/3/5/350003UK%20CE.pdf>

Errors and omissions excepted.

Copyright© 2024 AVSL Group Ltd, Unit 2 Bridgewater Park,
 Taylor Road, Trafford Park, Manchester. M41 7JQ.

AVSL (Europe) Ltd, Unit 3D North Point House,
 North Point Bus. Park, New Mallow Road, Cork, Ireland.