



© Cherub Technology Co., Ltd.

All Rights Reserved. No part of this publication may be reproduced, stored in a retrieval system, or transmitted, in any form or by any means, electronic, mechanical, photocopying, recording, or otherwise, without the prior written permission of Cherub Technology Co., Ltd.



## DP-2000

PROFESSIONAL  
DIGITAL PERCUSSION PAD


## USER MANUAL

Copyright©2023 Cherub Technology Co.,Ltd.


# USING THE UNIT SAFELY

## INSTRUCTIONS FOR THE PREVENTION OF FIRE, ELECTRIC SHOCK, OR INJURY TO PERSONS

### About ⚠️ WARNING and ⚠️ CAUTION Notices

 <b>WARNING</b>	Used for instructions intended to alert the user to the risk of death or severe injury should the unit be used improperly.
--	--

### About the Symbol

 <b>CAUTION</b>	Used for instructions intended to alert the user to the risk of injury or material damage should the unit be used improperly. * Material damage refers to damage or other adverse effects caused with respect to the home and all its furnishings, as well to domestic animals or pets.
--	--

## ALWAYS OBSERVE THE FOLLOWING

### ⚠️ WARNING

- Before using this unit, make sure to read the instructions below and the Owner's Manual.
- Do not open ( or modify in any way ) the unit or its AC adaptor.
- Do not attempt to repair the unit, or replace parts within it ( except when this manual provides specific instructions directing you to do so ). Refer all servicing to your retailer, the nearest NUX Service Center.
- Never use or store the unit in places that are:
  - Subject to temperature extremes ( e.g., direct sunlight in an enclosed vehicle, near a heating duct, on top of heat-generating equipment ).
  - Damp ( e.g., baths, washrooms, on wet floors ).
  - Humid.
  - Exposed to rain.
  - Dusty.
  - Subject to high levels of vibration.
- This unit may be installed on stand using a Clamp.
- When installing the unit on a stand with a clamp, the stand must not be placed in an unstable location or on an incline, but in a level and stable position. Even if a stand is not used, make sure that the unit is placed in a stable location.

### ⚠️ WARNING

- Be sure to use only the AC adaptor supplied with the unit. Also, make sure the line voltage at the installation matches the input voltage specified on the AC adaptor's body. Other AC adaptors may use a different polarity, or be designed for a different voltage, so their use could result in damage, malfunction, or electric shock.
- Do not excessively twist or bend the power cord, nor place heavy objects on it. Doing so can damage the cord, producing severed elements and short circuits. Damaged cords are fire and shock Hazards!
- This unit, either alone or in combination with an amplifier and headphones or speakers, may be capable of producing sound levels that could cause permanent hearing loss. Do not operate for a long period of time at a high volume level, or at a level that is uncomfortable. If you experience any hearing loss or ringing in the ears, you should immediately stop using the unit, and consult an Audiologist.
- Do not allow any objects ( e.g., flammable material, coins, pins ); or liquids of any kind ( water, soft drinks, etc.) to penetrate the unit.

### ⚠️ WARNING

- Immediately turn the power off, remove the AC adaptor from the outlet, and request servicing by your retailer, the nearest NUX Service Center.
  - The AC adaptor or the power-supply cord has been damaged.
  - If smoke or an unusual odor occurs.
  - Objects have fallen into, or liquid has been spilled onto the unit.
  - The unit has been exposed to rain ( or otherwise has become wet ).
  - The unit does not appear to operate normally or exhibits a marked change in performance.

- In households with small children, an adult should provide supervision until the child is capable of following all the rules essential for the safe operation of the unit.

- Protect the unit from strong impact. (Do not drop it!)

- Do not force the unit's power-supply cord to share an outlet with an unreasonable number of other devices. Be especially careful when using extension cords-the total power used by all devices you have connected to the extension cord's outlet must never exceed the power rating (watts/amperes) for the extension cord. Excessive loads can cause the insulation on the cord to heat up and eventually melt through.

- Before using the unit in a foreign country, consult with your retailer, the nearest NUX Service Center.

### ⚠️ CAUTION

- The unit and the AC adaptor should be located so their location or position does not interfere with their proper ventilation.

- Always grasp only the output plug or the body of the AC adaptor when plugging into, or unplugging from, this unit or an outlet.

- Any accumulation of dust between the AC adaptor and the power outlet can result in poor insulation and lead to fire. Periodically wipe away such dust with a dry cloth. Also, disconnect the power plug from the power outlet whenever the unit is to remain unused for an extended period of time.

- Try to prevent cords and cables from becoming entangled. Also, all cords and cables should be placed so they are out of the reach of children.

- Never climb on top of, nor place heavy objects on the unit.

- Never handle the AC adaptor body, or its output plugs, with wet hands when plugging into, or unplugging from, an outlet or this unit.

- If you need to move the instrument, take note of the precautions listed below. Make sure to have a firm grip, to protect yourself from injury and the instrument from damage.
  - Check to make sure that the clamp that fixes the unit to the stand has not become loose. Fasten them again securely whenever you notice any loosening.
  - Disconnect the power cord.
  - Disconnect all cords coming from external devices.

- Before cleaning the unit, turn off the power and unplug the AC adaptor from the outlet.

- Whenever you suspect the possibility of lightning in your area, disconnect the AC adaptor from the outlet.

- Should you remove security screws, make sure to put them in a safe place out of children's reach, so there is no chance of them being swallowed accidentally.

<b>Control panel</b>	
Front panel.....	04
Top panel.....	05
<b>Connect audio devices</b> .....	06
<b>About the screen</b> .....	07
<b>Ready to play</b> .....	08
Power on / off .....	08
How to play .....	08
<b>Tone operation-tone overall switch</b> .....	08
Select tone .....	08
Tone overall switch.....	08
<b>Effect Send Function Operation (EFX)</b> .....	09
<b>Metronome</b> .....	09
<b>Song function operation</b> .....	10
<b>Recording function operation</b> .....	10
<b>System function operation</b> .....	12
TRIGGER SETTING .....	12
SOUND TONE EDITING .....	12
LAYERS.....	13
PAD SETTING .....	13
EFFECT SETTING .....	14
KIT NAME.....	15
RESET SETTING .....	15
OPTION SETTING .....	15
OUTPUT SETTING .....	16
MIDI NOTE SETTING.....	16
WAV FILE SETTING.....	16
USB DISK / BLUETOOTH.....	17
EXPAND THE SETTING.....	17
<b>Specifications</b> .....	18

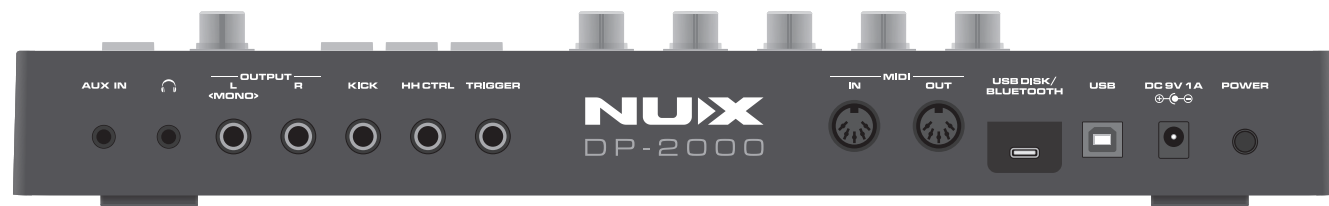
## ■ Front panel



<b>MASTER knob</b> Master output volume	<b>PHONES knob</b> Headphones volume	<b>TEMPO knob</b> Metronome speed regulation	<b>FX 1 knob</b> Effector gr 1 transmission adjustment (with FX 1 button below, this knob is invalid when FX 1 is off)
<b>FX 2 knob</b> Effector gr 2 transmission adjustment (with FX 2 button below, this knob is invalid when FX 2 is off)	<b>MUTE button</b> Global mute (including total output and headphones)	<b>KIT button</b> Drum selection button (press this key in any mode to jump to the drum selection interface)	<b>CLICK button</b> Turn on/off the Metronome
<b>FX 1 button</b> Effector group 1 on/off button	<b>FX 2 button</b> Effector group 2 on/off button	<b>F1 F2 F3 button</b> Multi-function button	<b>VALUE/ENTER knob</b> Parameter adjustment and confirmation key (rotate adjustment, press confirmation)
<b>REC button</b> Recording function button (need to use with U disk)	<b>SONG button</b> Music function button (need to use with U disk)	<b>PLAY/STOP button</b> Play and pause (play and pause U disk content)	

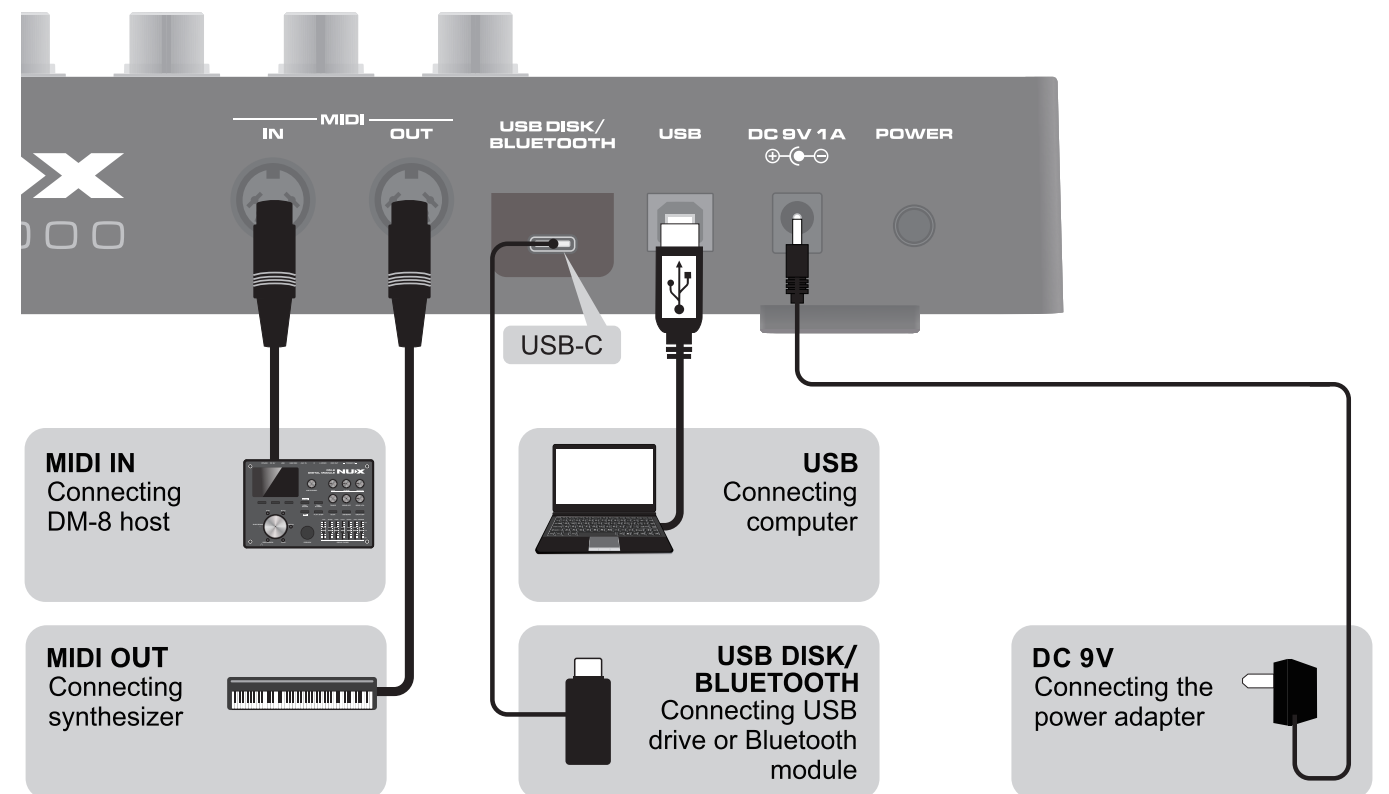
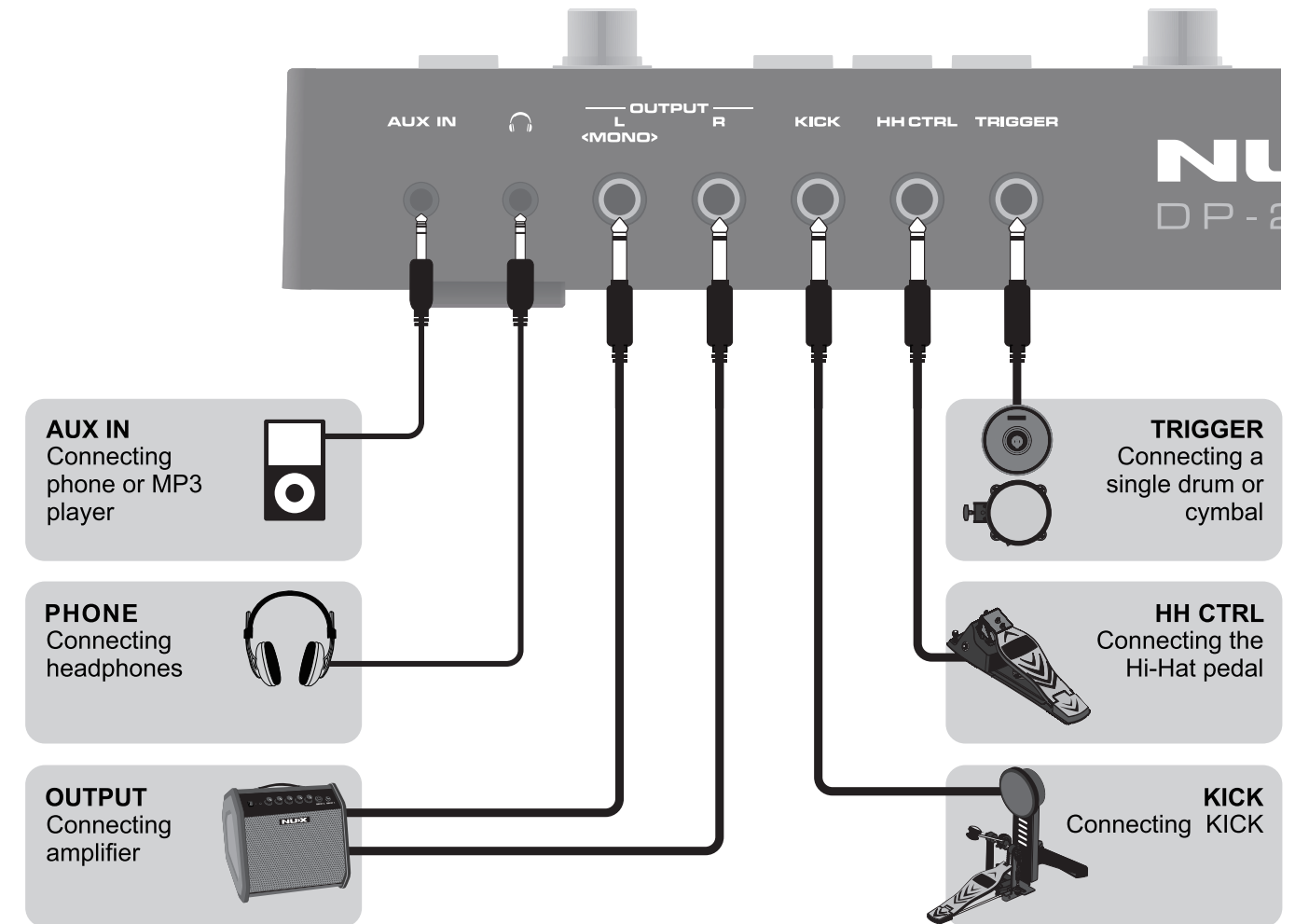
# Control Panel

## ■ Top panel









<b>AUX IN</b> 3.5mm external audio interface	<b>PHONE</b> 3.5mm headphone jack	<b>OUTPUT L &lt;MONO&gt;</b> 6.35mm left / mono output interface	<b>OUTPUT R</b> 6.35mm right sound channel output interface
<b>KICK</b> External bottom drum interface	<b>HH CTRL</b> External cymbals controller interface	<b>TRIGGER</b> External expansion interface	<b>MIDI IN</b> Midi signal input interface
<b>MIDI OUT</b> Midi signal output interface	<b>USB DISK/ BLUETOOTH</b> U disk or Bluetooth module interface	<b>USB</b> Output interface	<b>DC 9V 1A</b> Power supply adapter interface
<b>POWER</b> DP-2000 power supply switch			

# Connect audio devices



# About the screen



 Level 10 strength display	PAD1 Current percussion strike pad display	 Bluetooth connection icon	 The USB connection icon
 U disk connection icon	 Memory lock open icon	 Icon in the recording	TEMPO 220 Metronome speed display
CLICK Metronome function setting	MENU Primary menu	EFX Effect group allocation setting	

# Ready to play

## Power on / off



### Turn on the power supply

Turn on the power supply

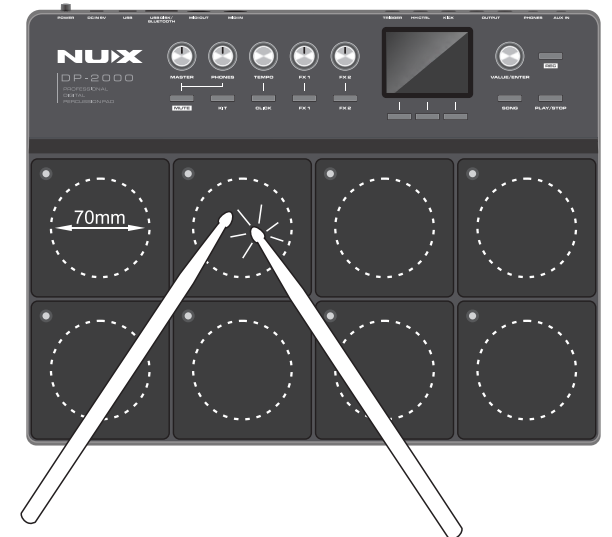
1. Set the MASTER and PHONES knobs off to minimum levels.
2. Turn down the volume of the external amplifier.
3. Press the power switch to turn the DP-2000 on.

\* When you turn on the power supply, you may hear a weak sound like the electric current sound, which is normal, not a fault.

### Turn off the power supply

1. Turn down the volume of the amplifier or turn off the amplifier first.
2. Turn off the power of DP-2000.

## How to play



Strike the center of the pad for the best results. The best strike area for each pad is a circle with a diameter of 70mm in the center

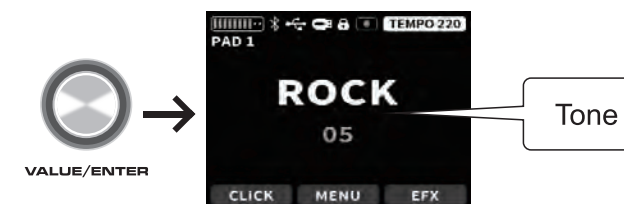
# Tone operation-tone overall switch

Enter the KIT mode upon boot-up.



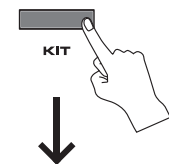
## Select tone

Turn the VALUE / ENTER knob to select the sound group you want.



## Tone overall switch

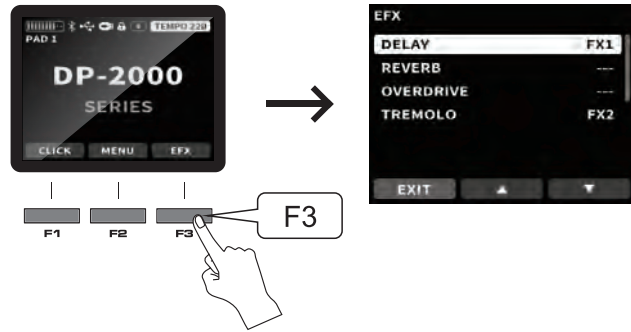
In any mode, pressing the KIT key returns directly to the KIT selection mode.



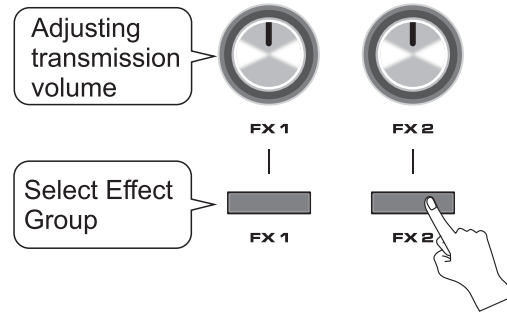
# Effect Send Function Operation (EFX)

## Entering EFX mode

Under the main interface, press the key F3 to enter the EFX mode, as shown below.

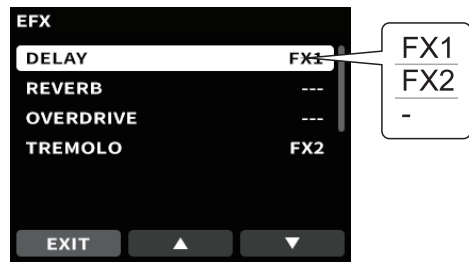


2. When it is determined to be assigned, press the FX 1 / FX 2 key under the panel to light it on, and then adjust the transmission volume of the group through the FX 1 / FX 2 knob.



## Send Effects

1. In this mode, select the effect you want to send through the upper and lower keys, and select the VALUE knob to assign it to either the FX 1 group or the FX 2 group or No assignment.

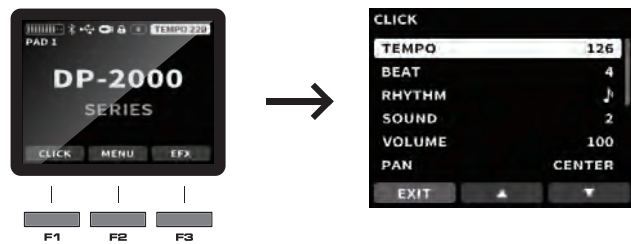


- Multiple effects can be assigned to the same group and adjusted by the FX knob.
- If FX 1 or FX 2 has no effect allocation, the FX 1 / FX 2 button on the panel cannot be lit, and the operation is invalid.

# Metronome

## Enter rhythm setting interface

Under the main interface, press the F1 key CLICK to enter the metronome setting, as shown in the figure below



## Set Metronome

After entering, select the parameters you need to adjust through the upper and down keys, and use the VALUE knob to adjust the parameter content.

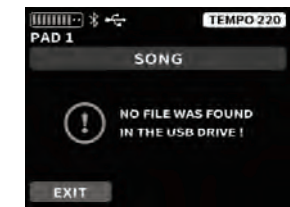


Parameter control table		
Name	Range	Function
TEMPO	40-280	Speed
BEAT	1-9	Beats
RHYTHM	4 notes / 8 notes / 16 notes / triplet	Beat choice
SOUND	1-6	Metronome tone
VOLUME	0-127	Metronome volume
PAN	L64-CENTER-R63	Metronome panning

# Song function operation

This mode needs to be used in conjunction with a USB drive, and only supports USB drives with formats FAT32 and FAT16. The WAV file placed in the USB flash drive must have a format of 44100Hz and 16bit. If any of the above conditions are not met, this function will not be able to be used.

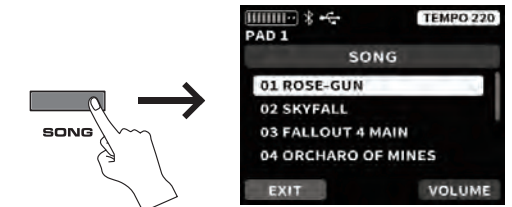
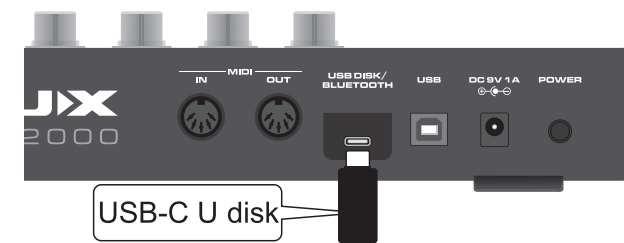
If there is no wav file in the U disk music or folder creation error, the figure below.



## Create directory

Before use, you need to create a folder in the U disk and name it SONG (capital), and put the song file in wav format into the SONG folder of the U disk (only wav format is supported).

If the U disk is ready, click the SONG button on the panel and go directly to the song selection interface below.



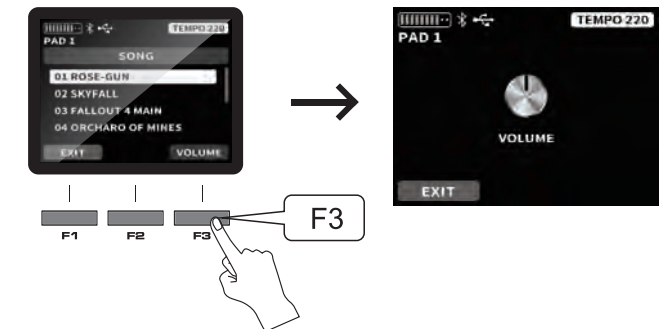
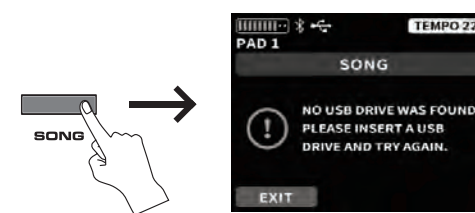
## SONG interface operation

Select the track through the VALUE knob and press PLAY / STOP to play or pause the piece.

Under the SONG interface, press the VOLUME corresponding to F3 to enter the song volume adjustment interface. Adjust the volume of the music by using VALUE.

## Enter the SONG interface

With no U disk connection, press the SONG button in the panel as shown below.



# Recording function operation

## Enter the recording interface

This mode must be used with the U disk. If the REC key is pressed without the U disk access, the following interface is displayed

When the U disk is correctly connected, press the REC of the panel, enter the recording mode, and the REC key is long and bright

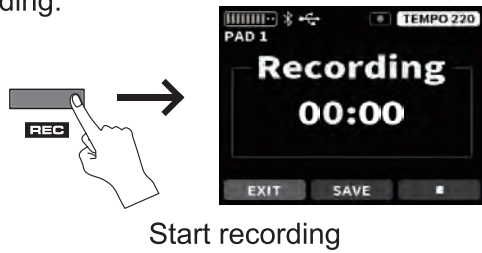


Entering recording mode

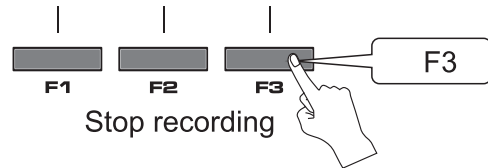
# Recording function operation

## Start/Stop Recording

In recording mode, press the REC key again to start recording, and then the REC key flashes. After the recording, press the F3 key to stop recording.



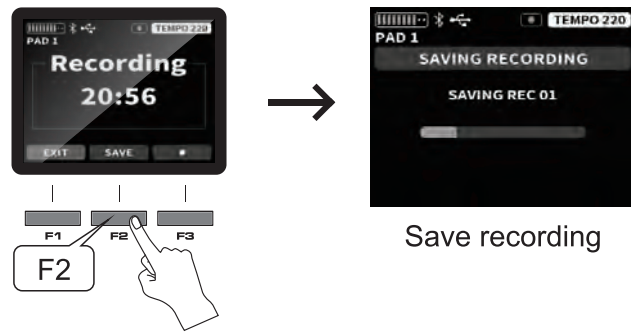
Start recording



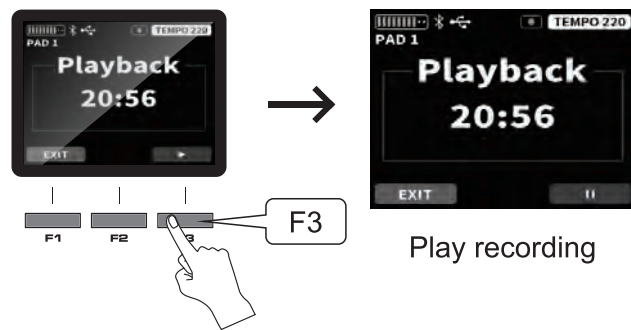
Stop recording

## Save/Play Recording

After the recording stops, you can choose to play the previous recording or save the previous recording. If you choose to save the recording, the previous recording will be saved in the SONG folder of the U disk.



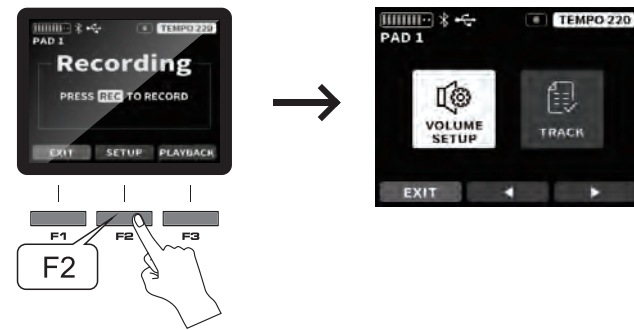
Save recording



Play recording

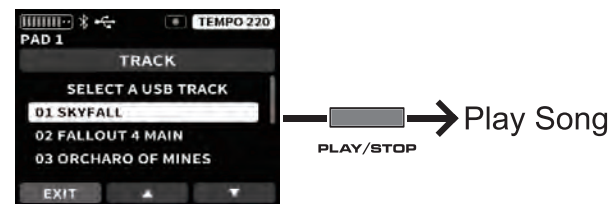
## Recording interface settings

Under the main recording interface, press F2 SETUP to enter the recording setting and the saved recording list.



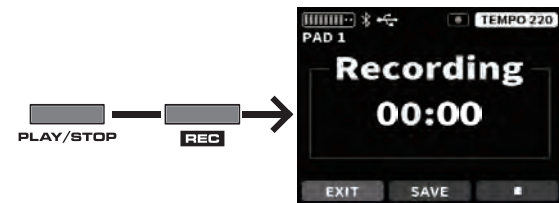
- VOLUME SETUP Used to adjust the volume balance of the accompaniment song and DRUM PAD.
- TRACK is the list of the saved recording content.

Under the TRACK interface, the music stored in the U disk can also be displayed, and you can follow the rhythm of the music. If REC is pressed under the TRACK interface, the recording will start and jump to the recording interface, where the music will be recorded at the same time as the content you play.



Play Song

Under the TRACK interface, press PLAY / STOP to play the music in the U disk. If you press REC after playing, the recording starts, jump to the recording interface, and the music and playing content will be recorded at the same time.

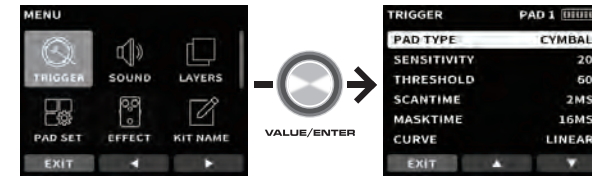


# System function operation

## TRIGGER SETTING

### Enter TRIGGER interface

Enter the MENU to find the TRIGGER through the VALUE / ENTER knob, and press the VALUE / ENTER to enter the TRIGGER setting.



### Set TRIGGER interface



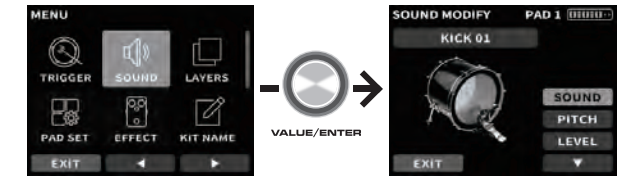
This interface is used to adjust the sensitivity and other parameters of each strike pad. Select the parameters you want to adjust with the F2/F3 key and use the VALUE knob.

Parameter control table		
Name	Range	Function
PAD TYPE	CYMBAL/DRUM PAD	This parameter is only enabled when external pads or cymbals are connected, otherwise it will be automatically hidden
SENSITIVITY	1-99	Adjust the strike pad sensitivity
THRESHOLD	1-99	Adjust the blow pad trigger level
SCANTIME	1MS-8MS	Adjust the detection time of the trigger signal
MASKTIME	4MS-64MS	Adjust the shielding time of the trigger signal
CURVE	LINEAR/EXP/LOG/LOUD	
RETRIG CANCEL	0-99	Regulates the repeated trigger value of the trigger signal
XTALK CANCEL	0%-80%	Adjust the cross-over crosstalk values

## SOUND TONE EDITING

### Enter SOUND interface

Enter the MENU to find the SOUND through the VALUE / ENTER knob, and press the VALUE / ENTER to enter the SOUND setting.



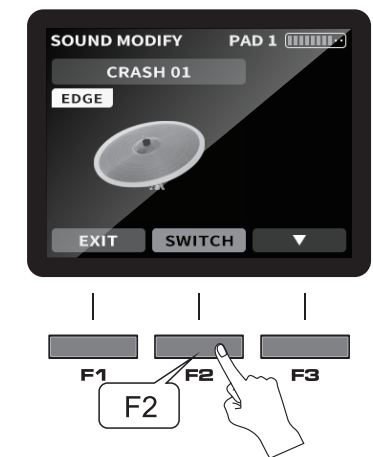
### Set SOUND interface



After selecting the timbre set, tap the striking pad you need to edit.

Select the parameters you need to adjust through the upper and lower keys, and rotate the VALUE / ENTER knob to adjust the parameter values.

When the SWITCH button appears in the selected part, click SWITCH to split the tone of the part to the percussion pad you need, such as RIDE can be split into cymbals / cymbals / cymbals.



# System function operation

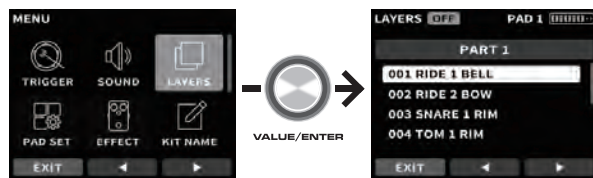
Parameter control table		
Name	Range	Function
SOUND	Drum / cymbals / special tone color.....	Adjust the tone
PITCH	-32 - 0 - 32	Adjust the level of parts
LEVEL	0-127	Adjust the volume of the parts

## LAYERS

This function only supports parameter adjustment for the 8 pads included in DP-2000 and is not valid for expansion.

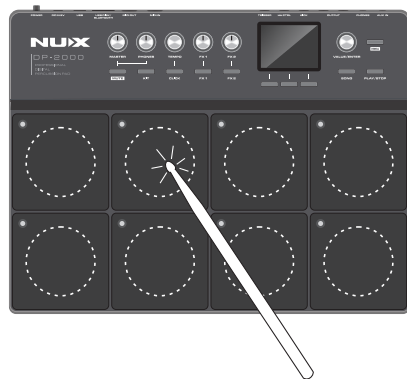
### Enter the LAYERS interface

Enter the MENU to find the LAYERS through the VALUE / ENTER knob, and press the VALUE / ENTER to enter the LAYERS setting.

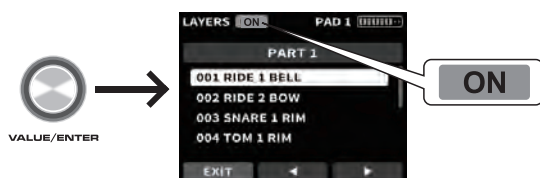


### LAYERS setting

1. In this interface, you need to hit to choose the pad you want to adjust first.



2. After you confirmed the pad you want to adjust. Press the VALUE/ENTER knob to turn on the LAYERS.

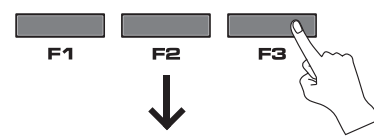
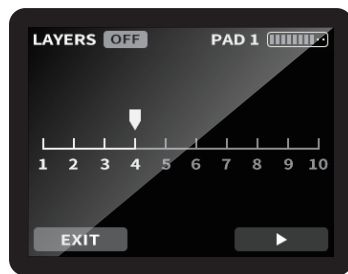


3. We divide each pad into 10 layers, and you can divide the 10 layers into any two areas, with different tones assigned to each area. Rotate the VALUE/ENTER knob to select your area.



### Tone allocation

After determining the partition, press F3 and go right to the regional tone allocation interface.

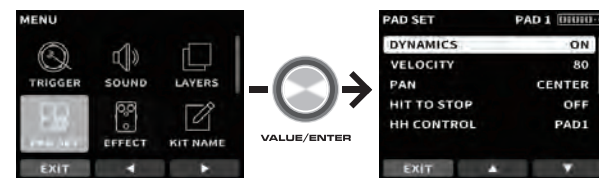


## PAD SETTING

This mode is used to adjust the settings of each pad.

### Enter PAD SET interface

Enter the MENU to find the PAD SET through the VALUE / ENTER knob, and press the VALUE / ENTER to enter the PAD SET setting.



### Set PAD SET interface

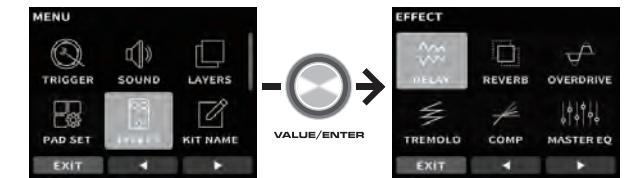
Select the parameters you want to adjust through the upper and lower keys and adjust the parameter values using the VALUE knob.

# System function operation

## EFFECT SETTING

### Enter EFFECT interface

Enter the MENU to find the EFFECT through the VALUE / ENTER knob, and press the VALUE / ENTER to enter the EFFECT setting.



### Set EFFECT interface



Open an effector, press VALUE / ENTER again to turn the effector on or off.



Parameter control table		
Name	Range	Function
DYNAMICS	ON/OFF	This parameter is used to adjust the trigger dynamics of the strike pad, such to ON, with 10 layers of strength dynamic tone feedback. If adjusted to OFF, this strike pad defaults to the maximum trigger strength value.
VELOCITY	1-127	Adjust the strength value triggered by the strike pad after closing the dynamic
PAN	L64-CENTER -R63	Adjust the sound phase of the strike pad
HIT TO STOP	ON/OFF	ON: After hitting a strike pad, hit the strike pad again before the sound ends, and immediately stop the sound of the strike pad. OFF: After tapping a strike pad, tap the strike pad again before the sound ends, and the strike pad sound will be triggered repeatedly immediately. (The sound triggered by the last hit is not aborted by the second hit)
HH CONTROL	PAD1-PAD8	This parameter value is only displayed after the external hihat controller is connected. It is used to select which pad your HH controller wants to control
HH SENSITIVITY	0-127	This parameter value is only displayed after the external hihat controller is connected. It's used to adjust the sensitivity of the external hihat controller.

## Effectors list

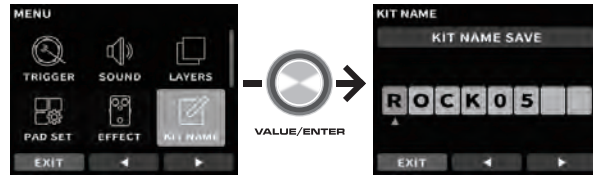
<p>Global Delay effector</p>	<p>Global Reverb effector</p>
<p>Global Overload effector</p>	<p>Global Tremolo effector</p>
<p>Bus compression effector</p>	<p>Bus EQ effector</p>

# System function operation

## KIT NAME

### Enter KIT NAME interface

Enter the MENU to find the KIT NAME through the VALUE / ENTER knob, and press the VALUE / ENTER to enter the KIT NAME setting.



### KIT NAME Group naming

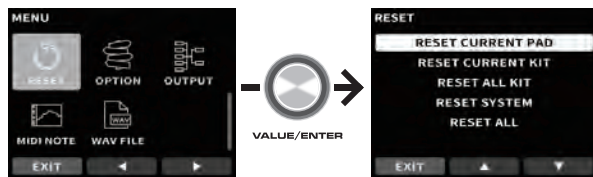
Select the character position through the left and right keys, the VALUE knob adjusts the characters.



## RESET SETTING

### Enter RESET interface

Enter the MENU to find the RESET through the VALUE / ENTER knob, and press the VALUE / ENTER to enter the RESET setting.



### Set RESET interface

Select the item you want to recover through the upper and lower keys, and press VALUE / ENTER to confirm the recovery.

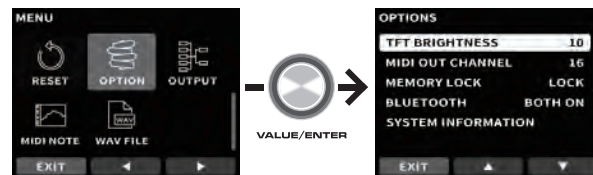


Parameter control table	
Name	Function
RESET CURRENT PAD	Restore all the parameters of the current hit pad
RESET CURRENT KIT	Restore the parameters of the current tone set to the factory settings
RESET ALL KIT	Return to all tone group parameters to factory settings
RESET SYSTEM	Restore system settings to factory settings (excluding timbre)
RESET ALL	Restore all factory-to-factory settings

## OPTION SETTING

### Enter OPTION interface

Enter the MENU to find the OPTION through the VALUE / ENTER knob, and press the VALUE / ENTER to enter the OPTION setting.



### Set OPTION interface

Select the parameters you want to adjust through the upper and lower keys and adjust the parameter values using the VALUE knob



Parameter control table		
Name	Range	Function
TFT BRIGHTNESS	1-10	The screen displays brightness
MIDI OUT CHANNEL	1-16	MIDI outgoing channel

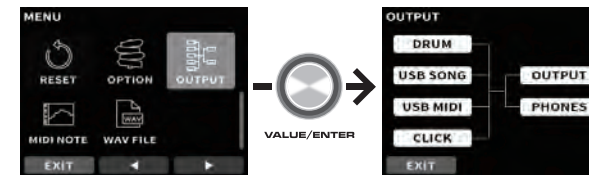
# System function operation

MEMORY LOCK	LOCK/ UNLOCK	Memory lock switch (parameters modified after LOCK will not be automatically saved)
BLUETOOTH	OFF/AUDIO ON/MIDI ON /BOTH ON	Bluetooth switch (display after connecting with the Bluetooth module)
SYSTEM INFORMATION	Unadjustable	System version is shown

## OUTPUT SETTING

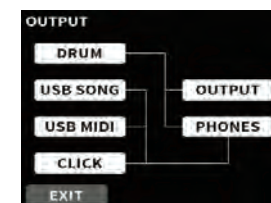
### Enter OUTPUT interface

Enter the MENU to find the OUTPUT through the VALUE / ENTER knob, and press the VALUE / ENTER to enter the OUTPUT setting.



### Select output mode

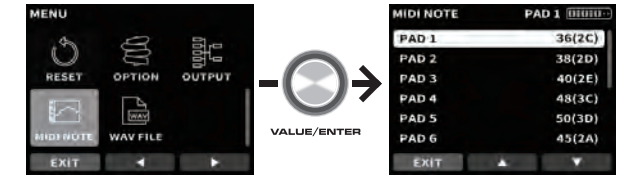
Use the left and right keys to select the output mode.



## MIDI NOTE SETTING

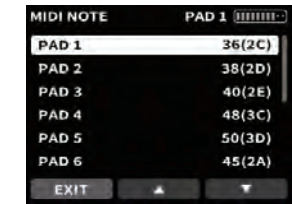
### Enter MIDI NOTE interface

Enter the MENU to find the MIDI NOTE through the VALUE / ENTER knob, and press the VALUE / ENTER to enter the MIDI NOTE setting.



### Set MIDI NOTE interface

Select the parameters you want to adjust through the upper and lower keys and adjust the parameter values using the VALUE knob.

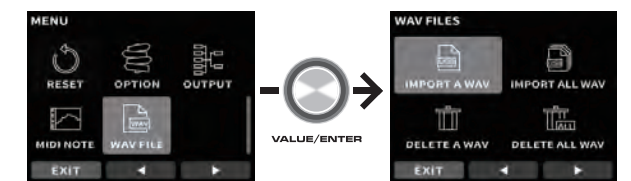


## WAV FILE SETTING

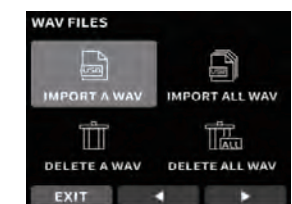
This mode needs to be used in conjunction with a USB drive, and only supports USB drives with formats FAT32 and FAT16. Before connect the USB drive to the DP-2000, you need to create a folder in the USB drive and named WAVIMPORT (capital). The WAV file placed in the USB drive must have a format of 44100Hz and 16bit. If any of the above conditions are not met, this function will not be able to be used. A single WAV file cannot exceed 20 seconds, and the file name must be in English. The total size of all WAV files cannot exceed 80MB or the total number cannot exceed 80.

### Enter WAV FILE interface

Enter the MENU to find the WAV FILE through the VALUE / ENTER knob, and press the VALUE / ENTER to enter the WAV FILE setting.



### Set WAV FILE interface



# System function operation

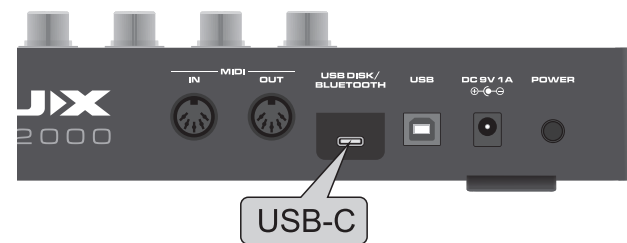
Use the left and right or VALUE knob to select content and press ENTER to enter.

Supports simultaneous import of single or multiple tone files using PLAY / STOP. The tone sounds after successful import will be found under the SOUND function interface and assigned to any percussion pad for performance.

Under this function, you can also delete the imported timbre in a single or batch.

Under the IMPORT A WAV list interface, you can try out the tone of the U disk through the PLAY / STOP button.

## USB DISK/BLUETOOTH



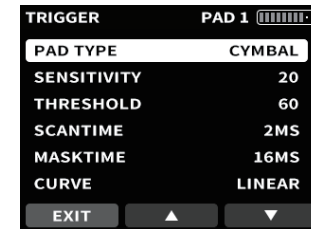
The USB-C (USB DISK / BLUETOOTH) interface of the back panel is the U-disk / Bluetooth module interface. Both can only connect one, do not use the expansion device to connect the U disk and Bluetooth module. When connected to the Bluetooth module, you can use the mobile phone / pad connected to the DP-2000 Bluetooth to play music.

## EXPAND THE SETTING

The DP-2000 back panel has three expanded interfaces: TRIGGER, HH CTRL and KICK.



**TRIGGER** You can access any single cymbals or a single electronic strike pad, and then select the device you access through the TRIGGER interface PAD TYPE under the menu. If the cymbals, select CYMBAL, if the drum, select DRUM PAD.



# Specifications

- **Display:** TFT LCD color screen
- **Tones:** 20 preset
- **Effect:** Delay, Reverb, Overdrive, Tremolo, Compressor, Master EQ
- **Pad:** 8 single zone pads
- **Interface:** USB
  - USB DISK/BLUETOOTH
  - MIDI OUT
  - MIDI IN
  - TRIGGER IN
  - HH CTRL(HIHAT CONTROL)
  - KICK
  - OUTPUT L/MONO
  - OUTPUT R
  - PHONES
  - AUX IN
  - DC IN 9V
- **USB:** WAV IMPORT, USB BLUETOOTH, USB DISK
- **Dimensions:** 408mm(L) x 314mm(W) x 62mm(H)
- **Weight:** 2.8 kg

## Accessories

- User manual
- NUX Sticker
- Sticks
- Mounting bracket
- Power adapter
- 6.35mm Patch cable
- NBT-1 Bluetooth Audio & MIDI Adaptor

\* Specification may change without notice.