

QTFX-LBF2

LED BUBBLE FOG MACHINE 800W

Order ref: 160.556UK

User Manual



Caution: Please read this manual carefully before operating
Damage caused by misuse is not covered by the warranty



A high-quality machine that combines a stream of bubbles with a powerful 800W fogger to produce a stunning smoke-filled bubble effect. The 8 bright LEDs on the front of the unit can be used to highlight the torrent of bubbles, producing an exciting and colourful effect that's ideal for parties and events. The unit itself is made from hardwearing steel, which is covered in a glossy hammered finish making it easy to keep clean. It comes complete with a fully functional control panel and smaller RF remote for simple wire-free operation and is DMX compatible for more precise control or connecting to a 2nd unit when needed.

- 800W Fogger produces up to 3000 Cu.Ft/min
- Wand-free high output bubble machine
- 8 Bright 8W RGB+UV LED's housed in the front panel
- In-built control panel with LCD display
- 433Mhz keyfob-style RF wireless remote
- 10 Channel DMX compatible for more precise control
- 1.2 Litre removeable fluid tanks for bubble and fog fluids
- Rugged steel design and hammered paint, wipe-clean finish

In the box:

Please check the contents to ensure that the product has been received in good condition.

- QTFX-LBF2 LED Bubble Fogger
- RF Remote Control
- UK/EU Mains Leads
- Mounting bracket & screws
- User guide

If you find any accessory is missing or the machine has arrived with damage, please contact your local dealer at once. Do not try to fix this item yourself or you will invalidate the warranty. Please keep the original packaging and invoice for any possible replacement or return demands.

Warnings:

1. To prevent risk of fire or electric shock, do not expose electrical parts to rain or moisture.
2. If liquids are spilled on areas other than inside the fluid tanks, disconnect the mains, allow the unit to dry out and have it checked by qualified personnel before use.
3. Avoid any impact, dropping or extreme pressure to the housing.
4. No user serviceable parts inside - do not open the case.
5. Allow the unit to acclimatise to room temperature before operating.
6. The QTFX-LBF2 has built-in fluid containers and should be operated in an upright position. Ensure that the unit is positioned on a stable, non-slip surface.

Safety and Cleaning:

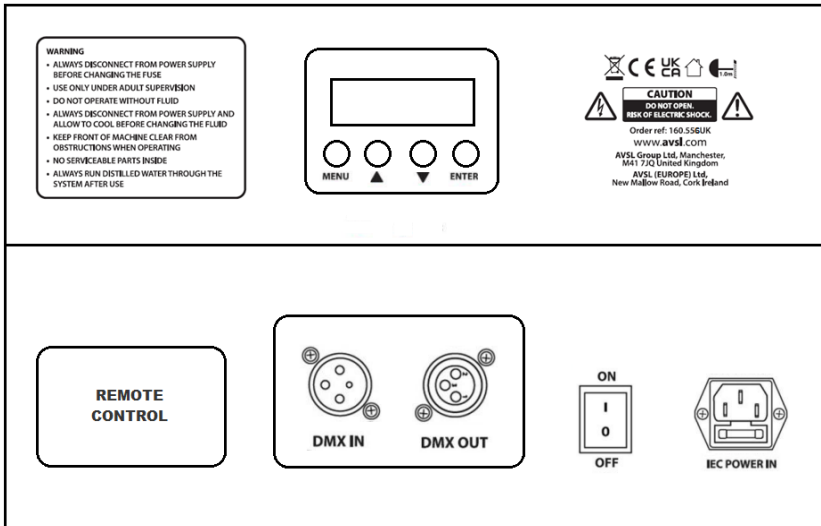
1. Check for correct mains voltage and condition of IEC lead before connecting to mains.
2. This unit must be earthed.
3. This unit uses a heating element – be aware that parts of the housing may be hot during use!
4. Use a soft dry or slightly damp cloth to clean the casing.
5. Do not use strong solvents for cleaning the housing.
6. Clean the fog mechanism periodically by operating with distilled water.
7. It is also recommended to use fog machine cleaning fluid (160.670UK) periodically.

Recommended Fluids:

The QTFX-LBF2 requires both fog fluid in the fluid tank and bubble fluid in the reservoir. For the efficient use of this unit we recommend the following QTX fluids:

QTX ref code	Description	Size
160.589UK	Premium fog fluid clear	5 Litre
160.575UK	Bubble fluid	5 Litre

Control Panels:



Setting Up:

1. Unpack the QTFX-LBF2 unit.
2. Unscrew the top caps of the fluid tanks and remove to fill with the recommended fog and bubble fluids.
NOTE: Please ensure you fill the correct tanks with the correct fluid to avoid causing damage to the machine!
3. Replace the tanks and screw the caps securely, making sure that the pipes are fed down to the bottom to ensure a consistent flow of fluid.
4. Connect to a DMX controller via the DMX in socket if DMX control is required.
5. Connect a second unit to the DMX out socket if required.
6. Connect the IEC mains plug and power the unit on.
7. The unit will begin the warming up process which normally takes around 3-4 minutes.
8. After use, remember to empty both fluid tanks if the machine is not to be used for a significant period of time.

Operation: Top Control Panel

MENU: Press to scroll through the menu options (see below table).

UP: Press to increase the current menu value

DOWN: Press to decrease current menu value

ENTER: Press to save the current menu value

The menu options displayed on the control panel are as follows:

Function	Selection	Content
Heating status	Up	Unit warming up please wait
	----	Unit is ready to use
Bubble control	Bo1	Bubble flow on
	Bo0	Bubble flow off
DMX512	A001-512	Set DMX address
Smoke volume	P1-100	Set fog output volume (low to high)
Fan speed	F1-F100	Set fan speed (low to high)
LED controls	CX0	No LED
	CX1	Red LEDs
	CX2	Green LEDs
	CX3	Blue LEDs
	CX4	Red and Green LEDs
	CX5	Red and Blue LEDs
	CX5	Green and Blue LEDs
	CX6	Red, Green and Blue LEDs
	CX7	Colour change
	CX8	Colour fade in
CX9	Colour fade out	

Operation: Wireless remote

The small RF remote control supplied can also be used when wireless control of the unit is needed. Press the relevant button repeatedly on the RF remote for the following functions:



- 1:** Fog effect 40%/90%/off
- 2:** Bubbles on/off
- 3:** Fan 30%/80%/off
- 4:** LED R/G/B/R+G/R+B/G+B/R+G+B/Col change/Col fade

Operation: DMX Control

For DMX control, connect a signal source to the DMX input on the unit via a balanced XLR lead. Extra units can also be controlled with the same DMX signal by looping through the DMX out on the unit. Set the unit to DMX512 mode and confirm the correct start address, then use the table below for channel selection.

Channel	Value	Content
CH1	0-5	Fog effect off
	6-255	Fog effect (low to high)
CH2	0-5	Bubble effect off
	6-255	Bubble effect (low to high)
CH3	0-5	Fan off
	6-255	Fan speed increase
CH4	0-5	Colour change/fade off
	6-127	Colour change
	128-255	Colour fade
CH5	0-255	CH4 Speed adjust (slow to fast)
CH6	0-5	Strobe off
	6-255	Strobe (slow to fast)
CH7	0-5	Red LED off
	6-255	Red LED (low to high)
CH8	0-5	Green LED off
	6-255	Green LED (low to high)
CH9	0-5	Blue LED off
	6-255	Blue LED (low to high)
CH10	0-5	UV LED off
	6-255	UV LED (low to high)

Specifications:

Power supply	220-240Vac, 50/60Hz (IEC)
Fuse rating	F5A
Power	800W
DMX channels	10CH
Warm up time	3-4 minutes
Remote control frequency	433Mhz
Fog output (approx.)	3,000 cu.ft per minute
Tank capacity	1.2 litres (bubble & fog)
Max. height	3-4m
Max. distance	3-5m
LED power	8 x 8W RGB+UV
Dimensions	245 x 395 x 495cm
Weight	11.8kg

Troubleshooting:

No power to main unit	Check mains voltage is correct and socket is switched on
	Check IEC lead is OK and connected properly
	Check mains fuse in IEC connector and fuse in plug top
	If fuse blowing repeatedly, refer to qualified service personnel
Power to unit but no haze/bubble output in manual or continuous mode	Check fluid level in tanks
	If fluid is OK and pump working, the lines may be blocked
	Check that output is not set to zero on the control panel
	Check that output is not switched off on the keyfob remote
	If blocked, clean with cleaner & distilled water
	Check that if DMX mode is selected, the DMX channel is correct
In DMX mode, check that haze output is not set to zero	



This product is classed as Electrical or Electronic equipment and should not be disposed with other household or commercial waste at the end of its useful life. The goods must be disposed of according to your local council guidelines

Errors and omissions excepted.

Copyright© 2024 AVSL Group Ltd, Unit 2 Bridgewater Park,
Taylor Road, Trafford Park, Manchester. M41 7JQ.

AVSL (Europe) Ltd, Unit 3D North Point House,
North Point Bus. Park, New Mallow Road, Cork, Ireland.